



USER'S MANUAL



WIRELESS OPTICAL MOUSE
RM-304 WIRELESS

Congratulations on purchasing the TM REAL-EL PC mouse!

Please read the following instructions carefully before connecting, operating or adjusting this product. Besides, please keep this Manual in a safe place for future reference.

COPYRIGHT

© 2016. ENEL GROUP OU. This Manual and information contained in it are copyrighted. All rights reserved. All trademarks are the property of their legal holders.

NOTICE OF RESPONSIBILITY RESTRICTION

Despite the exerted efforts to make this Manual more exact, some discrepancies may occur. The information in this Manual is given on "as is" terms. The author and the publisher do not bear any liability to a person or an organization for loss or damage which has arisen from the information contained in this Manual.

CONTENTS

1. SPECIAL FEATURES	2
2. PACKAGE CONTENTS	2
3. SYSTEM REQUIREMENTS	2
4. DESCRIPTION	3
5. INSTALLATION	3
6. TROUBLESHOOTING	6
7. TECHNICAL SPECIFICATIONS	6

1. SPECIAL FEATURES

- Power saving wireless technology
- Stylish ergonomic design
- Effective on most surfaces
- USB nano receiver included (range up to 10 m)
- Resolution 1000 dpi
- USB interface
- Powered by 2 AAA batteries
- Long life battery-fed operation
- Plug&Play technology

2. PACKAGE CONTENTS

- Optical mouse – 1 pc
- 2.4 GHz USB nano receiver – 1 pc
- AAA batteries – 2 pcs
- User's manual – 1 pc
- Warranty card – 1 pc

3. SYSTEM REQUIREMENTS

- Windows/Mac/Android.
- Free USB port.

4. DESCRIPTION

- ❶ Scroll wheel
- ❷ Battery compartment
- ❸ Nano receiver
- ❹ Optical sensor
- ❺ Power switch
- ❻ USB connector

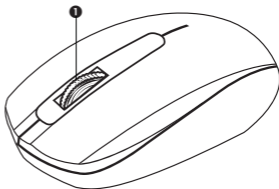


Fig. 1. Top view

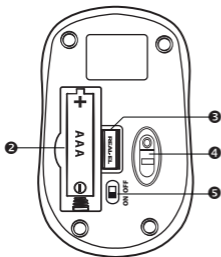


Fig. 2. Bottom view

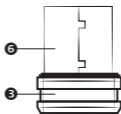


Fig. 3. Nano receiver

5. INSTALLATION

- Open the cover of the mouse battery compartment ❷, insert two AAA batteries into the battery compartment matching the polarity, and close the cover of the battery compartment (see Fig. 4).
- Connect the included nano receiver ❸ to a free PC USB port (Fig. 5).

- Turn on the mouse with the on/off switch **5** (the ON position). To activate the mouse, press any button of the mouse or turn the scroll wheel. If the mouse is connected correctly, it will turn on automatically.

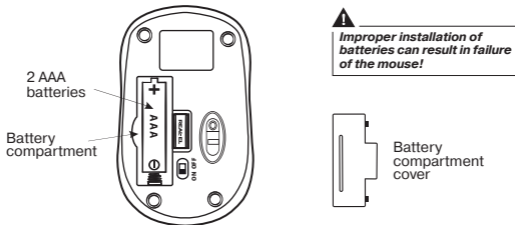


Fig. 4. Battery installation

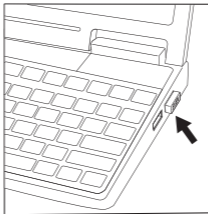


Fig. 5. Receiver connection

- After finishing work turn off the mouse with the power switch **Ⓢ** (the OFF position). After this, you can pull out the receiver **Ⓢ** from the PC USB port and insert it into the mouse (Fig. 6). When using the receiver **Ⓢ** again, pull it out from the mouse (Fig. 7) and connect it to the PC USB port again.
- Do not place the receiver into a confined metal space (table drawer, box, safe), as a metal screen does not transmit radio signals.
- If the batteries run down, the mouse works in jerks. It means that the batteries should be replaced with new ones, as it is shown in Fig. 4. Always install only identical new batteries.

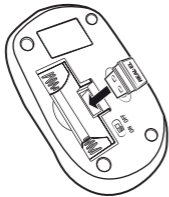


Fig. 6. Fitting the receiver into the mouse case

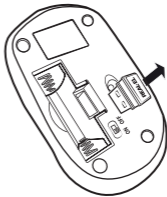


Fig. 7. Extraction of the receiver from the mouse case

! Important

- ▶ **This device meets the highest standards of energy conservation. Use the switch **Ⓢ** on the bottom of the mouse to switch it on/off – it will help you extend the mouse battery life.**

6. TROUBLESHOOTING

Problem	Solution
The mouse does not work.	<ol style="list-style-type: none"> 1. Make sure that the nano receiver has been inserted into the USB port and its distance to the mouse is less than 10 m. 2. Check whether the battery have been installed correctly. 3. Check if the battery have run down, replace the battery with new ones if necessary. 4. Address nearest authorized service center.

7. TECHNICAL SPECIFICATIONS

Parameter	Value
OS compatibility	Windows/Mac/Android
Type of mouse	wireless 2.4 GHz
Operating range, m	10
Resolution, dpi	1000
Quantity of buttons	2 + 1 (scroll wheel)
Interface	USB
Error-free running time	more than 3,000,000 strokes
Battery type	2 × AAA
Dimensions, mm	102 × 60 × 35
Weight, g	51

Notes:

- **Technical specifications given in this table are supplemental information and cannot give occasion to claims.**
- **Technical specifications and package contents are subject to change without notice due to improvement of TM REAL-EL production.**



Model: **RM-304 Wireless**

Manufacturer: ENEL GROUP OU, Jõe tn 5-39, Tallinn, Harjumaa 10151, Estonia.
Made in China.

® **Registered Trademark of ENEL GROUP OU. Estonia.**