

 **REAL-EL**

USER MANUAL



**WIRELESS
OPTICAL MOUSE
RM-480 W**

Congratulations on your purchase of the REAL-EL PC mouse!

COPYRIGHT

© 2024. ENEL GROUP OU.

This Manual and information contained in are copyrighted. All rights reserved.

TRADEMARKS

All trademarks are the property of their legal holders.

SAFETY PRECAUTIONS

- Protect your mouse from high humidity, dust or high temperatures.
- Do not use gasoline, spirit or other dissolvents for cleaning. This may cause damage to the surface. Clean the device with soft cloth.
- Do not attempt to disassemble or repair your device.
- Protect the device against powerful shocks and falls – they may damage the internal electronics.

PACKAGE CONTENTS

- Wireless optical mouse – 1 pc
- USB power cable – 1 pc
- User manual – 1 pc
- Warranty card – 1 pc

SPECIAL FEATURES

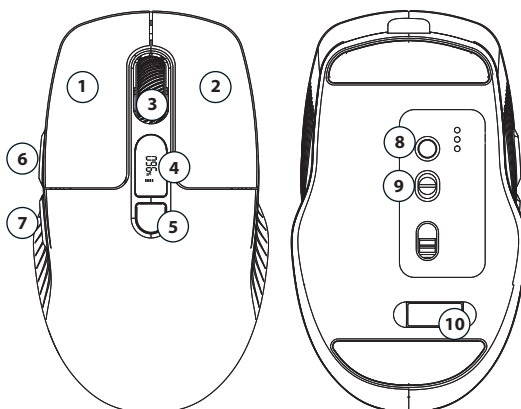
- Display for battery and dpi status
- 2.4 Ghz wireless mode
- Bluetooth mode
- Built-in rechargeable battery
- Silent buttons

SYSTEM REQUIREMENTS

- Windows/Mac/Adroid/iOS
- Available USB port.

TECHNICAL DESCRIPTION

1. Left button
2. Right button
3. Scrolling wheel
4. LED Display
5. DPI switch / battery level
6. Forward
7. Backward
8. Bluetooth module BT1/
BT2 selection
9. Mode selection 2.4Ghz/
Bluetooth
10. Receiver 2.4Ghz



CONNECTION

Before use remove the protective film from the sliding pads.

Step 1: Turn on the mouse and select the connection mode
Move the slider (9) from OFF to 2.4GHz or Bluetooth mode to enable the mouse.

Step 2: Connecting in 2.4 GHz mode:
After selecting the mode, connect the USB adapter to your device (laptop, computer, etc.). The mouse will connect automatically

Step 3: Connecting in Bluetooth mode 1:
Briefly press button (8), the blue indicator 1 will be activated.
On your laptop, computer or other device, start searching for a Bluetooth device (BT1) and connect it.

Step 4: Connecting in Bluetooth mode 2:
Briefly press the (8) button, the blue indicator 2 will be activated.
On your laptop, computer or other device, start searching for a Bluetooth device (BT2) and connect it.

Note: The connection method may differ depending on the device to which you want to connect the mouse.

If you want to change the operating mode of the mouse, short press the Mode button (8 or 9) to switch modes. Long-press the Mode (8) button to pair with a new device BT1 or BT2 mode.

TECHNICAL SPECIFICATIONS

Functions	Value
Quantity of buttons	5 + 1
Optical resolution	800/1200/1600 dpi
Connection types	2.4 GHz / Bluetooth
Operating range	10 m
Battery	Lithium-ion 400 mAh
Support	Mac, PC, Android, iOS, iPad OS
Charging interface	USB Type-C
Conformity with	FCC, CE
Dimensions	108 × 63 × 39 mm
Weight	65 g

Notes:

- *Technical specifications given in this table are supplemental information and cannot give occasion to claims.*
- *Technical specifications and package contents are subject to change without notice due to the improvement of REAL-EL production.*



Manufacturer: ENEL GROUP OÜ, Harju maakond, Rae vald, Jüri alevik, Aruküla tee 55a, 75301, Estonia.
® Registered Trademark of ENEL GROUP OÜ. Estonia.